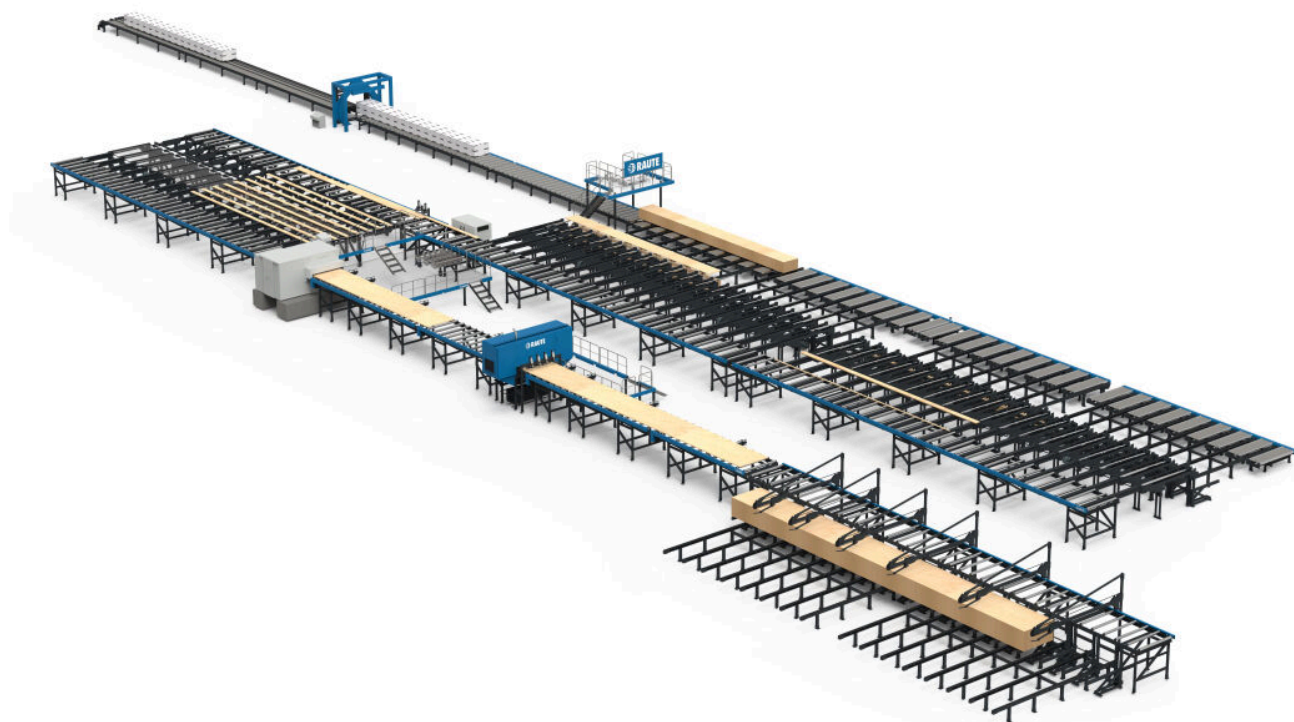


LVL Billet Handling Line R7

BILLET HANDLING AND FINISHING MADE TO PERFECTION



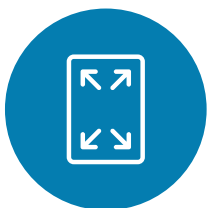
LVL Billet Handling Line R7 seals the perfection

On Raute's Billet handling line R7 you finish your LVL products to desired length and size with weatherproof coating, whichever your customers' needs are. The boards and panels are safely wrapped and covered, they can also be branded and marked with certificate data. After the billet handling, the premium quality LVL products are ready for transport to the customer or working site.

The line requires four operators for the line to function at a maximum capacity of 120,000 m³/year but the LVL Billet Handling Line R7's cutting, finishing, stacking, and packaging are automated.



Key benefits



LENGTH AND SIZE
VARIATION
ACCORDING TO END
USE



WEATHERPROOF
COATING



BRANDED PACKAGING



HIGHLY AUTOMATED



References



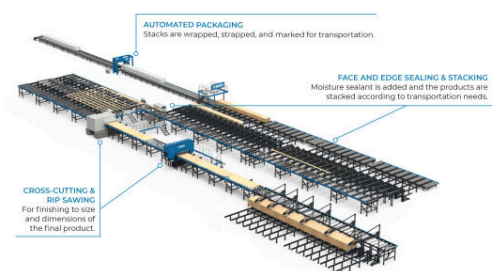
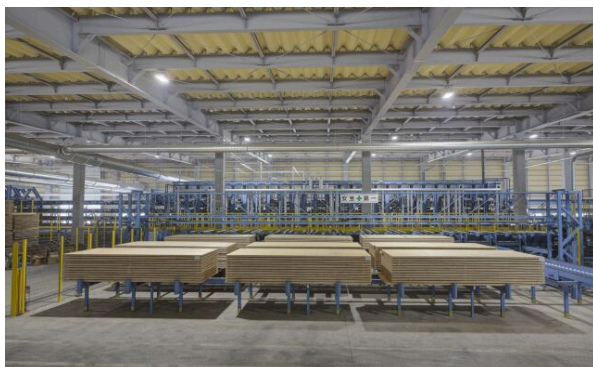
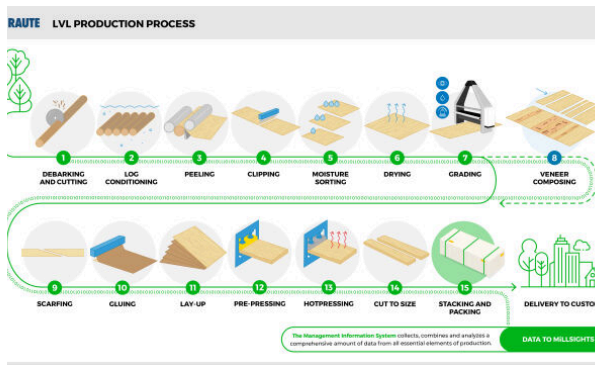
VMG Lignum

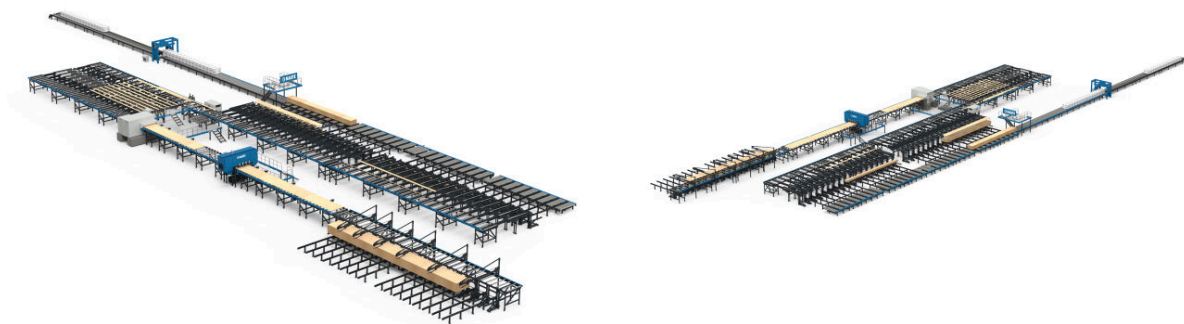
VMG Lignum takes a giant leap towards creating a sustainable home by adding LVL mill.



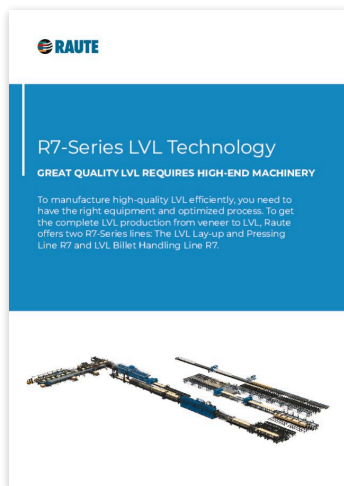
[Read more](#)

Images and videos





Downloadable material



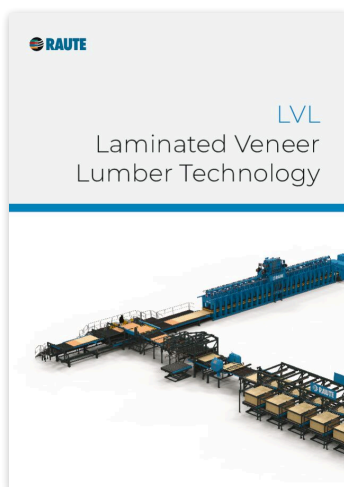
[Download PDF](#)



[Download PDF](#)



[Download PDF](#)



[Download PDF](#)

Technical specifications

Operators on the Line	4
Capacity up to (m3/h)	24
Product Thickness Range (mm)	15 - 90
Line widths available (m)	1.2, 1.8, 2.5
LVL length max (m)	24
Sanding	●
LVL edge easing	●
Face and edge sealing	●
LVL stacker bins	2
Lumber wrap packing	●
Stretch wrap packing	●

LVL billet handling

Finalizing the products to be shipped for customers

Billet handling finalizes the LVL products to their correct size and measurements with high-quality finishing. The finalized products get sealed and packed with branded and secure packings ready for transportation to customers.

After cooling, the hot-pressed billets are processed to finished LVL boards and panels. Processing may consist of sanding, cross-cutting, and rip sawing. LVL boards may be edge and face sealed against elements and finally examined and packed. Branded LVL packets from the billet handling line are ready to be shipped to end use customers.

On the billet handling line also various surface treatments can be done. The boards and beams can be painted or varnished with a weather-resistant coating which ensures that the LVL products don't mold or swell due to moisture.

Raute's billet handling solutions are always delivered with intelligent management information system MillsIGHTS.



raute.com

Making Wood Matter