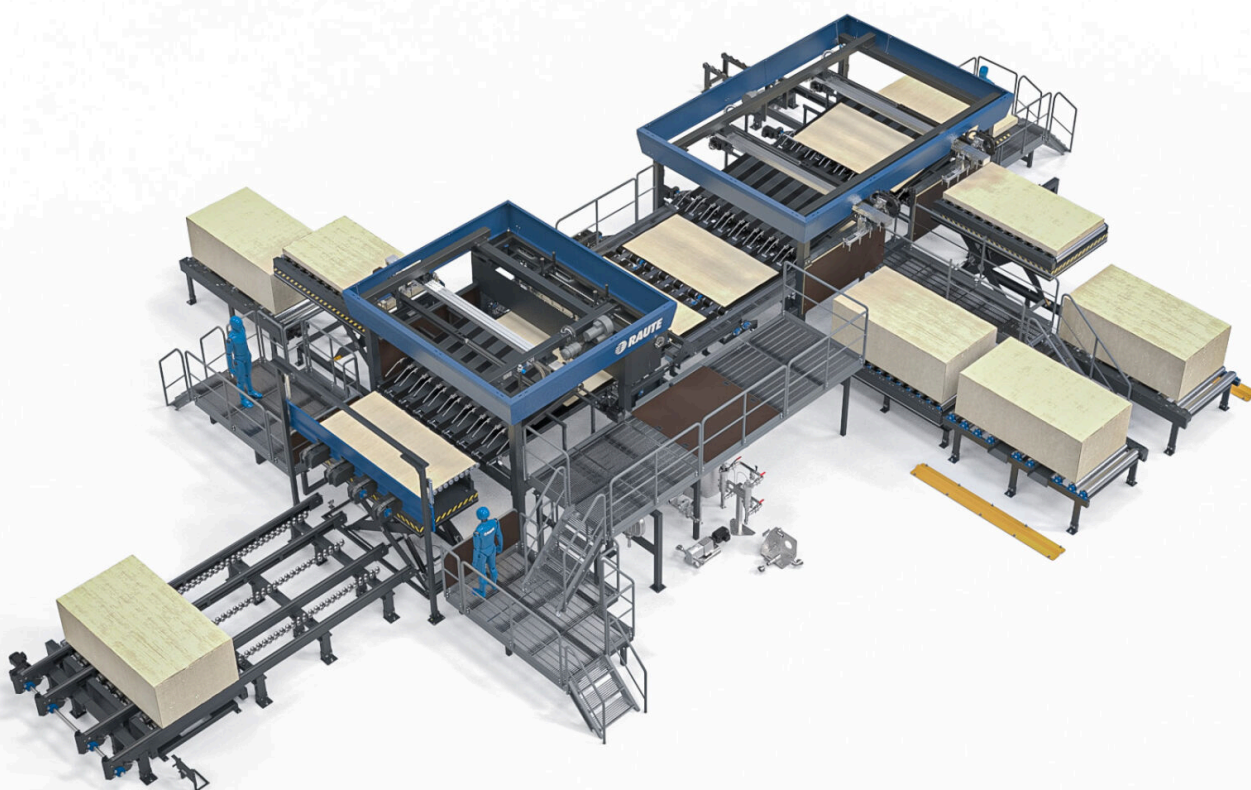


Plywood Lay-up Line R3

**ECONOMICAL AND AFFORDABLE
LAY-UP LINE WITH A CLEVER
DESIGN**



Plywood Lay-up Line R3 - cost-efficient for all your needs

Raute Plywood Lay-up Line R3 is a lay-up line with a low installed power need. The one-sided liquid extruder gluing method (LEG) decreases glue consumption up to 20% compared to traditional roller gluing. It is also gentle and does not break thinner sheets.

Paired ply numbers give you the possibility to use thicker sheets inside the plywood structure, reducing the need for gluing and thus bringing savings in glue consumption. The line enables making both uneven and even ply panel constructions.

The line utilizes automatic feeding and proper sheet alignment is handled by operators. The line runs typically with three operators and is easy to maintain.

Raute has delivered the most one-sided gluing lay-up lines in the world for over 20 years - utilize our expertise also for designing a tailored lay-up line for your specific needs!



Key benefits

7500

CAPACITY UP TO 7 500
VENEER SHEETS PER
8H WORK SHIFT

-20%

SAVE UP TO 20% IN
GLUE CONSUMPTION



PAIRED PLY NUMBERS
THAT SUIT YOUR END-
PRODUCT NEEDS



LOW INSTALLED
POWER NEED



References



CHINA

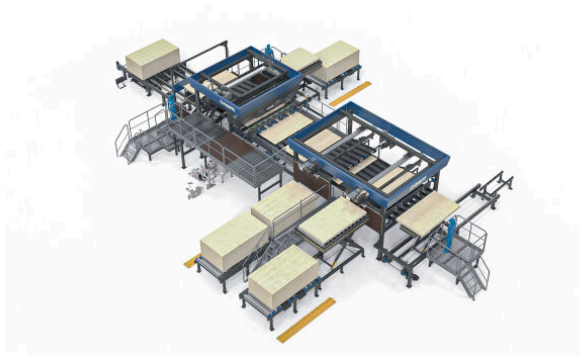
Guangxi Guoxu Spring Woodbased Panel Co., Ltd.

Raute has delivered modern, high technology veneer production lines with high-quality analyzers to Guoxu Spring Woodbased Panel Co., Ltd in South China.



[Read more](#)

Images and videos



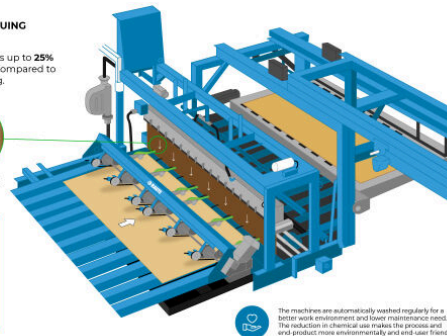
BENEFITS OF ONE-SIDED GLUING

One-sided gluing saves up to **25%** in glue consumption compared to traditional roller gluing.



IMPROVED OVERALL QUALITY

No mechanical contact with glue application, minimizing the risk of damage, especially edge and corner damage. Reduces manual material handling. Easy board control. Veneer thickness variation and roughness are the same, glue spread, reducing the risk of panel deformation.



The machines are automatically washed regularly for a better work environment and lower maintenance costs. The reduction in chemical use makes the process and end product more environmentally and end user friendly.



VIDEO

What R3 Series is
all about

Joe J. ... Vice President, R3 Series



[Link to video content](#)



VIDEO



[Link to video content](#)

T DEM
R3
RAU

VIDEO

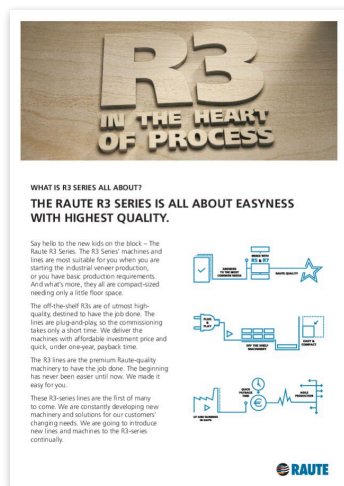


[Link to video content](#)

Plywood Lay-up Line R3

Product Video

Downloadable material



[Download
PDF](#)

Technical specifications

Operators on the Line	3
Gluing Method	Liquid Extruder
Hybrid Veneer feeding	<input checked="" type="radio"/>
Plywood sizes	4x8, 5x5
Capacity up to (sheets/8h)	7200

Plywood lay-up

Plywood lay-up with optimized glue consumption

In lay-up, face veneers, long core veneers and cross core veneers are combined into plywood, and fed to the lay-up table in the correct order for each cross-ply construction. Glue is spread evenly between every layer to make the sheets stay together.

With 50 deliveries of plywood lay-up lines, Raute is the number one provider of one-sided gluing solutions in the world. Raute Plywood Lay-up solutions bring up to 25% savings in glue consumption compared to traditional roller gluing. The machines are automatically washed regularly for a better work environment and lower maintenance need, and the wash water is re-used in mixing glue. The reduction in chemical use makes the process and end-product more environmentally and end-user friendly.

The right fit for your needs depends on your capacity expectations and desired number of operators. Fast changing of glue spreading systems from Liquid Extruder Gluing (LEG) to Curtain Coating (CC) brings flexibility to your production, making the use of different glue mixtures possible. Even gluing quality brings savings in hot pressing through less waste.

Start your production or add capacity easily with our R3-Series. When you want a proven, widely-known workhorse of the industry, the R5-Series is your solution. Put automation and machine vision in full use with our flexible R7-Series and master your productivity with high speed and maximum capacity.



raute.com

Making Wood Matter