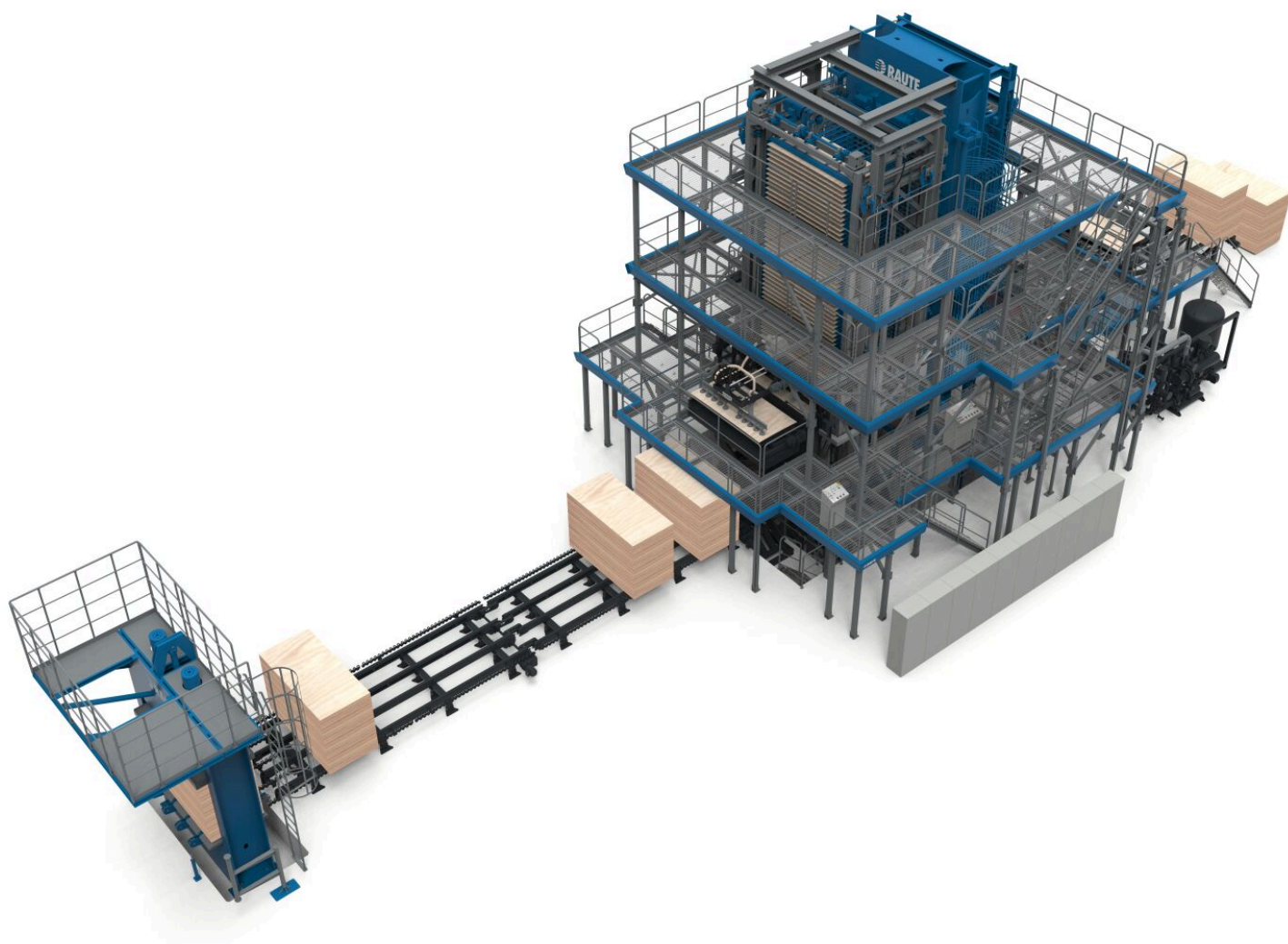


Plywood Pressing Line R7

HIGH CAPACITY FOR PRESSING EVEN THICKER AND LARGER PLYWOOD



Plywood Pressing Line R7 - for highest capacity and quality

Raute's own design from structure to heat flux, Plywood Pressing Line R7 is a robust, automated high capacity pre-pressing and pressing line for plywood in all thicknesses and from all raw materials. Press open time is minimized for highest capacity and the working platform makes operation and maintenance safe to perform.

Our pressing lines are robust enough to last for decades and the press user interface is easy to use. The sturdy hot platens are controlled from all four corners, compensating for any defects in the wood and making sure plywood is pressed optimally for even quality. Evenly distributed heat throughout the press heats all the wood and glue joints thoroughly also during continuous operation.

Thickness control prevents overpressing and maintains even end-product thickness. The smooth surface of hot platens further contributes to highest plywood quality.

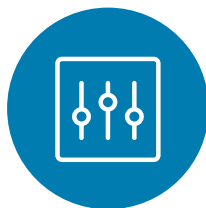
MILLSIGHTS data capturing and reporting system provides insight into elements affecting your production and helps you analyze them. The system shows you optimal operating adjustments and helps you potentially increase your production, reduce costs, save energy and achieve higher profits.

Utilize our expertise for designing a tailored press for your specific heating and pressing needs for larger or smaller sheet sizes!

Key benefits



THE SHORTEST PRESS
OPEN TIME IN THE
MARKET INCREASES
CAPACITY



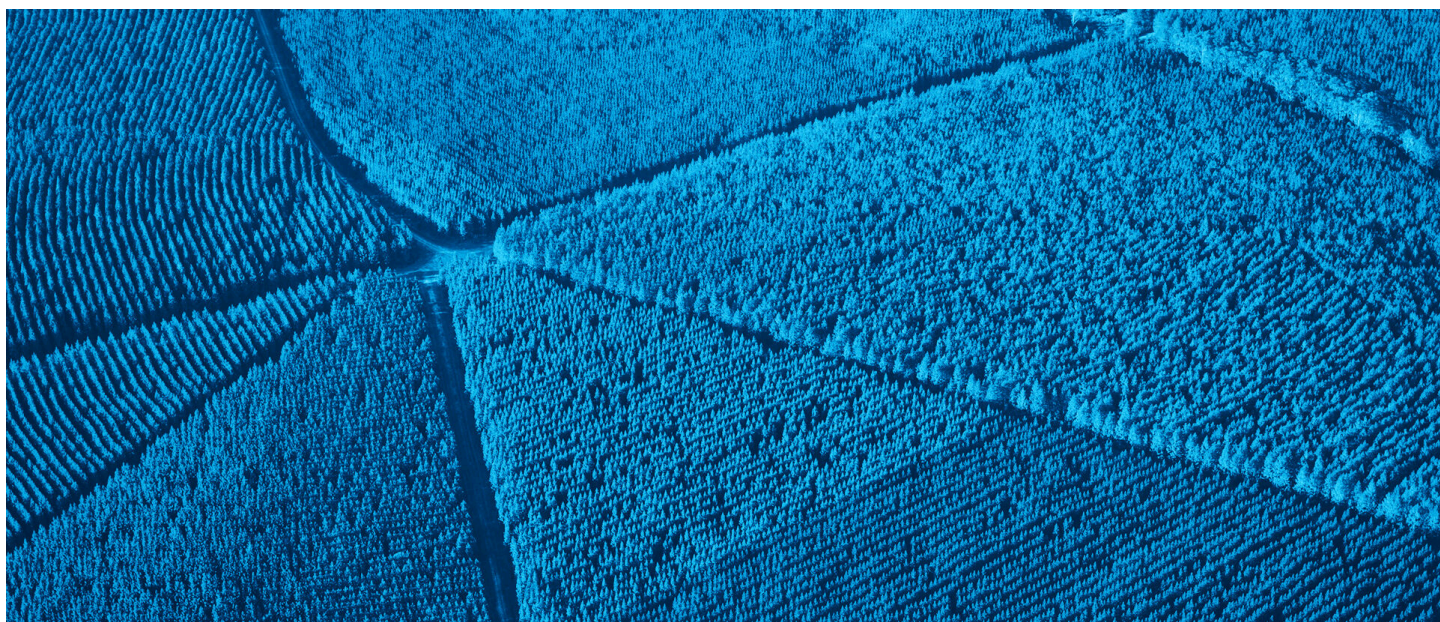
THICKNESS CONTROL
TO PREVENT
OVERPRESSING AND
MINIMIZE SANDING
NEED



UP TO 50 OPENINGS
FOR MAXIMUM
CAPACITY



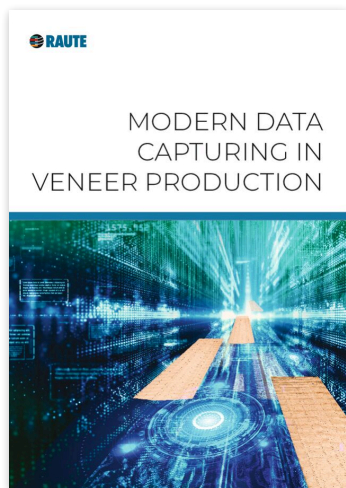
EASY TO USE PRESS
USER INTERFACE



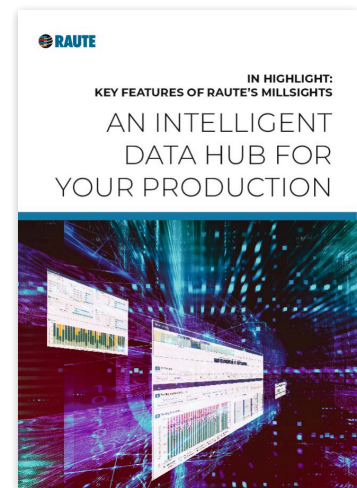
Images and videos



Downloadable material



[Download
PDF](#)



[Download
PDF](#)

Technical specifications

	R7	R7-Gripper
Operators on the Line	1	1
Installed power (kW)	180	180
Available sizes (ft)	4x8, 5x10	4x8
Daylight No. (max)	50	50
Daylight opening (max)(mm)	110	110
Product Thickness Range (mm)	4 - 50	3 - 30
Press open-time (s)	< 60	< 50
Pre-press Opening Speed (mm/s)	100	100
Lay-up Feeding Rate (pcs/min)	13	13
Hot Press Temperature accuracy (+/- C)	2	2
Sum Thickness Control	●	●
Automatic Base Plate Feeding	●	●

Plywood pressing

Pre-pressing and hot pressing lines for high-quality plywood

In pressing the plywood panel reaches its final mechanical strength. First, the lay-up stack is pre-pressed at room temperature to give plywood panels enough strength for automatic handling during hot pressing. The panels are then pressed between hot press platens where final curing of the glue takes place.

The right fit for your needs depends on your capacity expectations and desired number of operators. With fully automated Raute Plywood Pressing Lines, one operator can take care of the whole line: the pre-pressed plywood stack is fed automatically between the hot platens, and automatically discharged for stacking. Hot pressing is optimized to ensure sheets are pressed for an optimal time with optimal pressure and temperature for maximum plywood quality.

When you want a proven, widely-known workhorse of the industry, the R5-Series is your solution. Put automation and machine vision in full use with our flexible R7-Series - master your productivity with high speed and maximum capacity, and get insight into your production with MILLSIGHTS data capturing and reporting system.



raute.com

Making Wood Matter