

# Block Centering Analyzer R7 - Peeling

**NUMBER ONE BLOCK CENTERING  
SYSTEM ON THE MARKET**



## Ensure continuous recovery with intelligent block centering

When you want to get the most from wood at the peeling line, Block Centering Analyzer R7 (formerly known as SmartScan HD) is your number one choice. This analyzer includes the most sophisticated XY centering and block optimization to ensure the best possible veneer recovery. Lasers scan the block and advanced algorithms define optimal block position to peel out the maximum amount of veneer. When you want to maximize high-quality face veneer production, optimized block centering is a must.

Our Block Centering Analyzer R7 has patented autocalibration ensuring continuous centering accuracy and the best possible veneer recovery. Autocalibration measures the centering result of each block. This data is utilized to calculate needed corrections to maintain constant centering performance.



## Key benefits

+15%

INCREASE VENEER  
RECOVERY UP TO 15 %

+20%

PRODUCE UP TO 20 %  
MORE FACE VENEER



INCREASE UPTIME  
WITH LONGER  
MAINTENANCE  
INTERVALS



MAXIMUM  
PRODUCTION  
CAPACITY



SHORT PAYBACK TIME





## References



### Garnica Group

The Garnica Group chose Raute's Block Centering Analyzer R7 to update their mill's log centering technology.



[Read more](#)



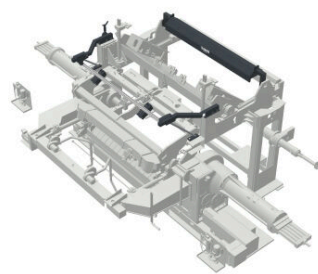
### International Panel & Lumber

International Panel & Lumber met their goal to improve the charger and lathe on their peeling line using Raute products.

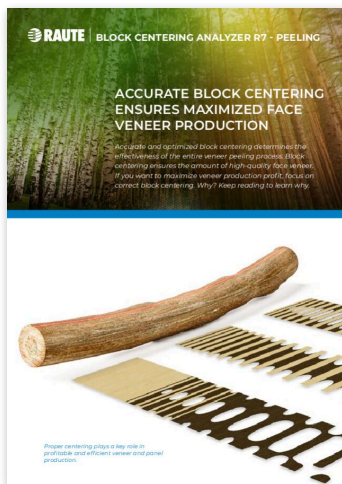


[Read more](#)

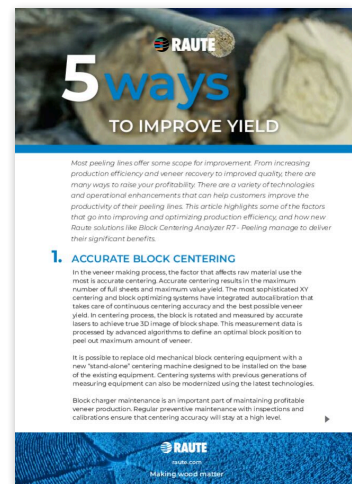
## Images and videos



## Downloadable material



[Download  
PDF](#)



[Download  
PDF](#)

## Technical specifications

Block Diameter (mm)	140-1200
Block Length (ft)	5 - 10
Centering Accuracy	± 2mm
Block scanning up to (pcs/min)	15-20

# Analysts for Veneer Peeling

## Analysts make the most of your raw material starting at the peeling line

Peeling is the first process phase in veneer production. It is also one of the most important process phases, so it truly makes a difference in what happens at the peeling line.

Multiple things can be measured with analyzers to enhance the peeling process. Optimize block centering with intelligent analyzers to maximize veneer recovery. Visual analyzers detect the best possible point for each cut based on the visual defects and the veneer dimensions. Moisture analyzers enable sorting the veneer sheets for different moisture grades to maximize drying capacity.

Some analyzers do this all and even strength analysis at once. Take a look at our integrated analyzer solutions which combine the features of two or even three analyzers into one compact system.



[raute.com](https://raute.com)

Making Wood Matter