

Panel Repair Station R5

**MAXIMIZE PRODUCTIVITY BY
INTEGRATING NEW CAPACITY FOR
EXISTING PROCESS**



Panel Repair Station R5 - for new and existing process

Raute Panel Repair Station R5 (patented) is the best solution for starting industrial panel repairing in a mill or adding new capacity to existing processes. This advantage is achieved through an easy investment as the Panel Repair Station R5 fits into the same space as a traditional manual repair cell would and no foundations are needed. Space-saving is reached by repairing panels directly in a stack on the topmost panel.

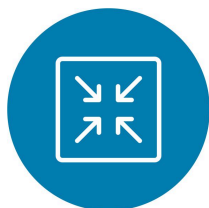
Panel repairing process using Raute Panel Repair Station R5 is cost-efficient by significantly reducing work hours and repair material. These savings are achieved with the most modern analyzer technology on the market, which allows optimizing the filling material usage.

Panel Repair Station R5 brings flexibility to your material flow in the mill as you can repair trimmed and un-trimmed panels with filling material of your choice.

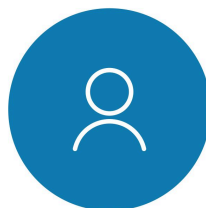
Panel Repair Station R5 is a true labor saver as one operator can handle two stations simultaneously.



Key benefits



**TAKES ONLY 8X10M
FLAT FLOOR SPACE**



**ONE OPERATOR CAN
HANDLE TWO
STATIONS
SIMULTANEOUSLY**



**USES 20% LESS
REPAIRING
MATERIALS THAN
TRADITIONAL
REPAIRING METHODS**



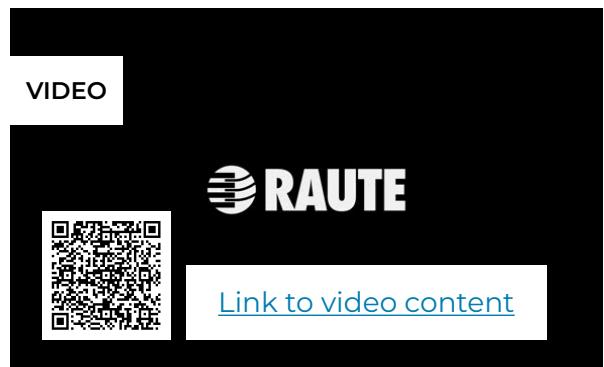
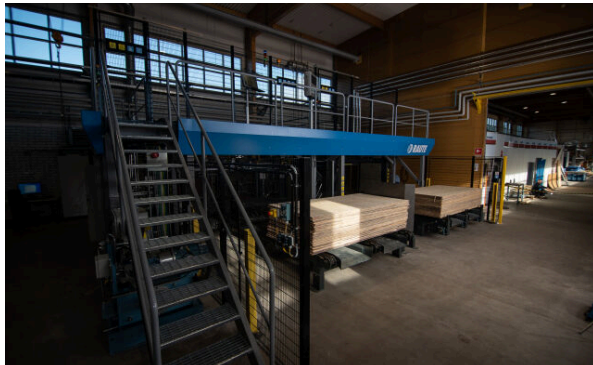
**FAST INSTALLATION -
UP AND RUNNING IN
TWO WEEKS FROM
DELIVERY**



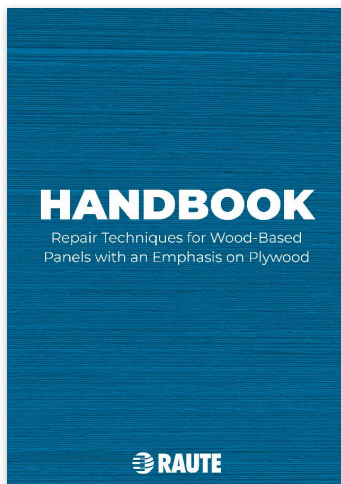
**UNIFORM
PRODUCTION
QUALITY IS
COMPLIANT WITH ALL
MAIN STANDARDS**



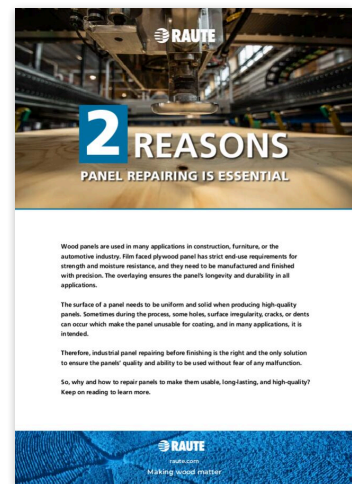
Images and videos



Downloadable material



[Download
PDF](#)



[Download
PDF](#)

Technical specifications

Operators on the Line	1
Minimum Floor space needed (m)	8x10
Panel Thicknesses (mm)	3 - 40
Panel Sizes Variation (ft)	4x8 - 5x10, 8x13
Repairing Methods	Router and poly or putty
Capacity up to (panels/min)	5

Panel repairing

Save time and material with panel repairing

Panel repairing means fixing defects after the panel has been made. Repairing the panel is done because some defects cannot be repaired before the panel is formed. By repairing these defects, the end quality of the panel is higher meaning better recovery with more valuable production for the whole mill.

Repairing is the last manual heavy process in plywood production. It is hard to get people to do manual repairing as it is very unergonomic and difficult to make consistently according to the quality rules. By automating the repair process, it is possible to reduce work-related injuries and sick leaves.

Putty and synthetic repair chemicals have taken major development steps recently as repair materials. Chemical, visual, and mechanical properties suit better for repairing with or without overlaying.

In many applications, one-component putty replaces two-component materials. This means ease of use and material savings in production.

Raute has developed three new solutions for panel repairing which are based on the recent improvements in machine vision analyzing capabilities and high-speed motion control. These improvements result in breakthroughs in capacity, and quality and reduce the usage of repairing material. The solutions make uniform quality on a 24/7 basis. Raute's panel repairing solutions are for any type of wood panels – from plywood to solid wood panels.

Panel Repair Station R5 is the compact solution for starting the automated repairing or adding capacity with an easy investment. The station fits into the same space as the traditional manual repair cell would and it doesn't require special foundations.

Panel Repairing Line R5 is the newest addition to the product family. It is designed for repairing solid wood panels in a continuous line, where both panel sides can be repaired automatically, without taking them out of the line. The line is compact and thus usually fits into the place reserved for manual repair, and it needs only one supervising operator.

Panel Repairing Line R7 brings uncompromised capacity for the most demanding needs. The line can handle trimmed and untrimmed panels and repairs them on the move. Typically, the whole mill production is run through this line.



raute.com

Making Wood Matter