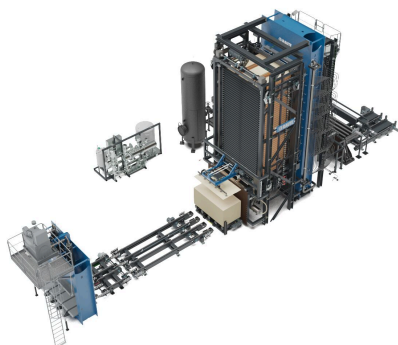


Plywood Pressing Line R7



BENEFITS

- The shortest press open time in the market increases capacity
- Thickness control to prevent overpressing and minimize sanding need
- Up to 50 openings for maximum capacity
- Easy to use press user interface

TECHNICAL DETAILS

	R7	R7-Gripper
Operators on the Line	1	1
Installed power (kW)	180	180
Available sizes (ft)	4x8, 5x10	4x8
Daylight No. (max)	50	50
Daylight opening (max)(mm)	110	110
Product Thickness Range (mm)	4 - 50	3 - 30
Press open-time (s)	< 60	< 50
Pre-press Opening Speed (mm/s)	100	100
Lay-up Feeding Rate (pcs/min)	13	13
Hot Press Temperature accuracy (+/- C)	2	2
Sum Thickness Control	●	●
Automatic Base Plate Feeding	●	●