

## Block Round-up Lathe R3

**EFFICIENT DEBARKING AND  
ROUND-UP FOR SPINDLELESS  
PEELING**



## Block Round-up Lathe R3 - for small diameter blocks

Block Round-up Lathe R3 is designed especially for use as part of the spindleless Veneer Peeling Line R3, but can also operate as a standalone round-up lathe.

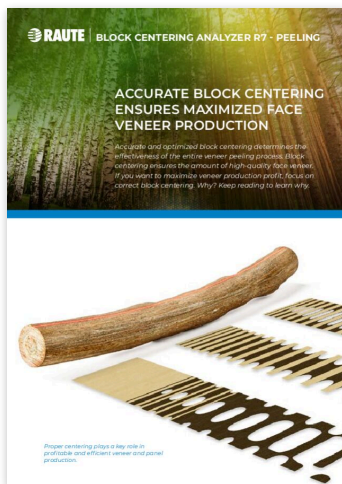
This robust Nordic design round-up lathe is perfect for utilizing small diameter blocks with reasonable investment. The standard round-up lathes fit your needs with three different size models: 4/3 ft, 5/4 ft and 8 ft. The lathe is operated by one operator.



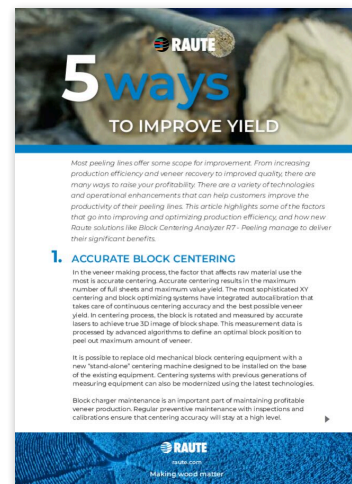
## Images and videos



## Downloadable material



[Download  
PDF](#)



[Download  
PDF](#)

## Technical specifications

Block Diameter (mm)	90 - 450
Block Cycle time up to (pcs)	6
Block length nom. (ft)	3 - 8

# Block chargers

## Block chargers - optimal centering improves veneer recovery

Block charger is the start of your veneer, plywood or LVL manufacturing process and determines its effectiveness. If block centering is not optimized, you will permanently lose the opportunity to maximize the yield and full sheet recovery from your raw material.

Accurate laser scanning together with optimal block centering algorithms ensure recovery and maximize the amount of high-quality face veneer. Proper centering adapts to any block: different shapes and sizes, curved blocks and varied diameters.

Raute laser centering solutions in our R5 and R7-Series peeling utilize automated centering. Its patented autocalibration maintains centering accuracy improving yield in continuous operation.

Round-up lathe is an efficient method for centering straight, small diameter blocks. Raute R3-Series peeling line utilizes a manual round-up lathe before veneer peeling to peel off bark and round the blocks.

Raute centering solutions are available for new or existing Raute peeling lines as modernizations and also for other manufacturers' peeling lines.



[raute.com](https://raute.com)

Making Wood Matter