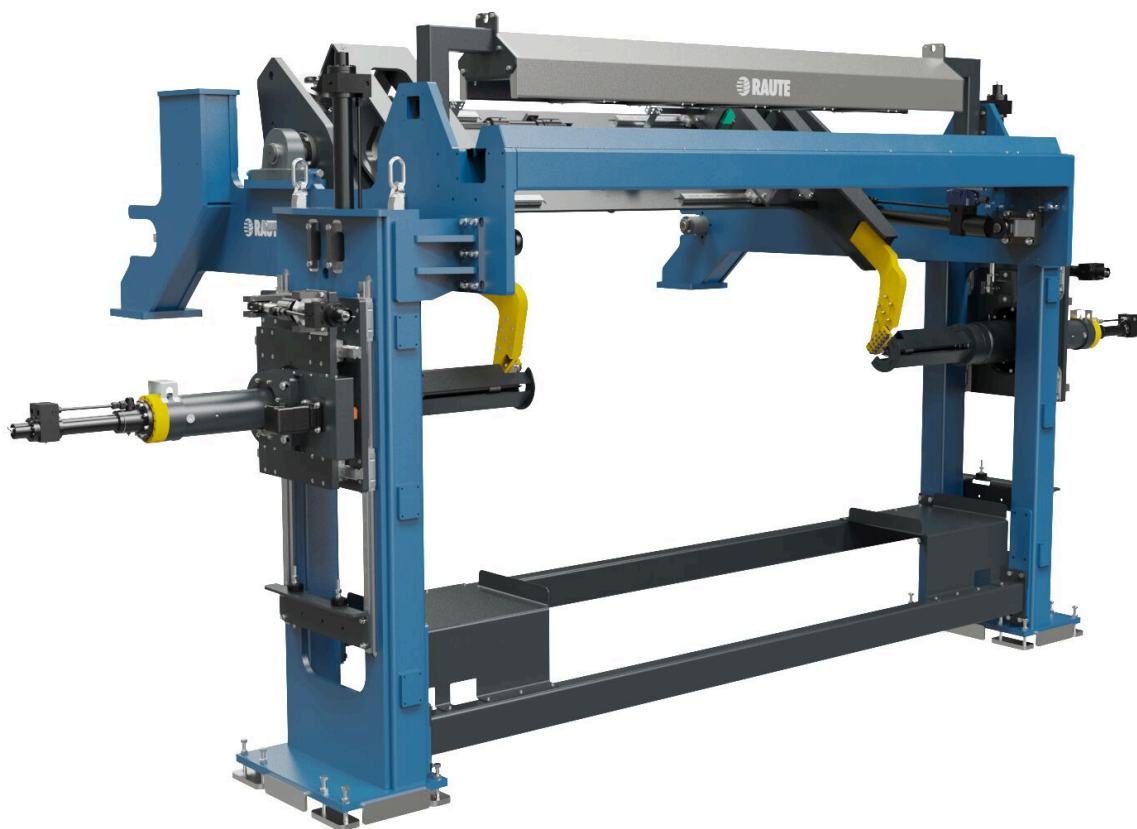


Block Charger R7

**CUSTOMIZABLE FOR ANY BLOCK
LENGTHS AND DIAMETERS**



Block Charger R7 - for all block centering needs

A perfect match for Veneer Lathe R7, the Block Charger R7 processes blocks with the highest capacity. It can be adapted to suit almost any block lengths and diameters, including varied lengths.

Block Centering Analyzer R7 offers maximal scanning accuracy and centers blocks optimally for lathe spindles. The analyzer's advanced algorithms improve full sheet recovery up to 15%.

The patented autocalibration maintains constant centering accuracy in continuous production. It enables the same accuracy between different size blocks regardless of wearing parts between service breaks. This is possible with two lasers that measure each block in lathe spindles and compare the results to charger measurements.



Images and videos

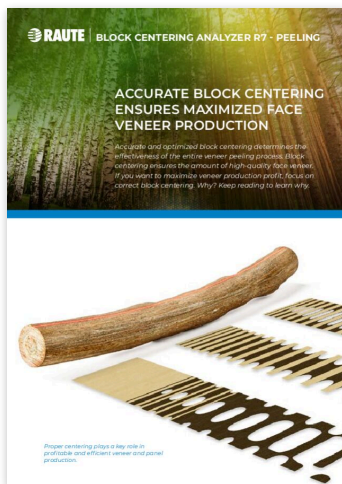


VIDEO

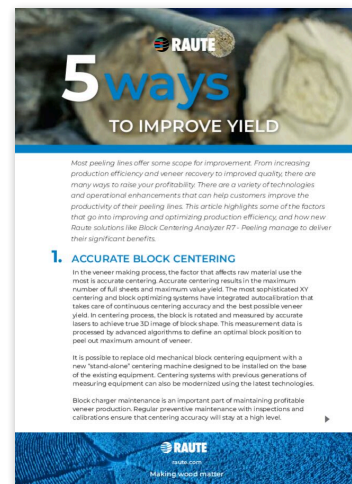


[Link to video content](#)

Downloadable material



[Download PDF](#)



[Download PDF](#)

Technical specifications

Block Diameter (mm)	140 - 1200
Block Centering	Block Centering Analyzer R7
Block Cycle time up to (pcs)	15
Block length nom. (ft)	3 - 11

Block chargers

Block chargers - optimal centering improves veneer recovery

Block charger is the start of your veneer, plywood or LVL manufacturing process and determines its effectiveness. If block centering is not optimized, you will permanently lose the opportunity to maximize the yield and full sheet recovery from your raw material.

Accurate laser scanning together with optimal block centering algorithms ensure recovery and maximize the amount of high-quality face veneer. Proper centering adapts to any block: different shapes and sizes, curved blocks and varied diameters.

Raute laser centering solutions in our R5 and R7-Series peeling utilize automated centering. Its patented autocalibration maintains centering accuracy improving yield in continuous operation.

Round-up lathe is an efficient method for centering straight, small diameter blocks. Raute R3-Series peeling line utilizes a manual round-up lathe before veneer peeling to peel off bark and round the blocks.

Raute centering solutions are available for new or existing Raute peeling lines as modernizations and also for other manufacturers' peeling lines.



raute.com

Making Wood Matter